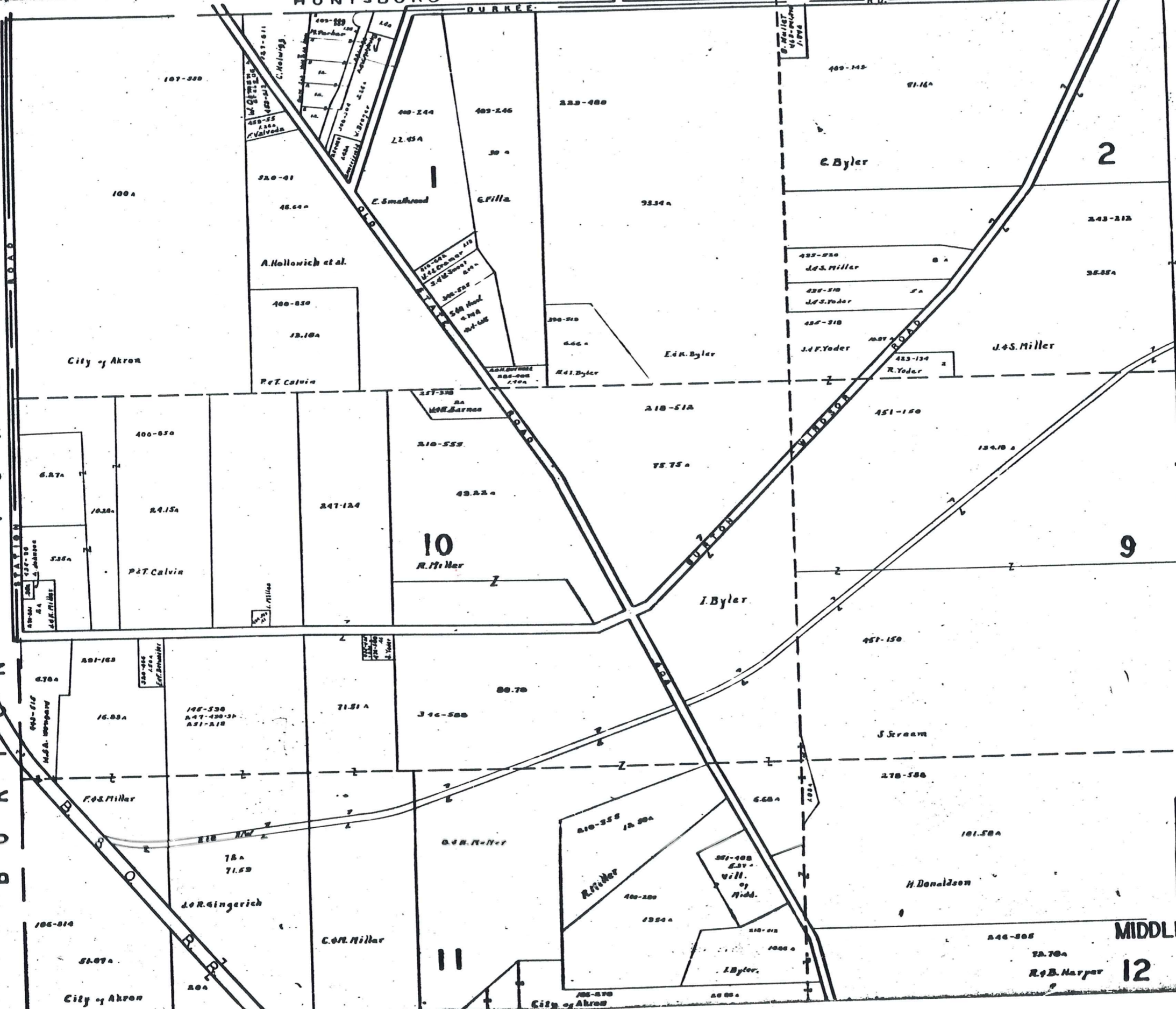


HUNTSBURG TOWNSHIP
BURTON TOWNSHIP

DURKEE RD.

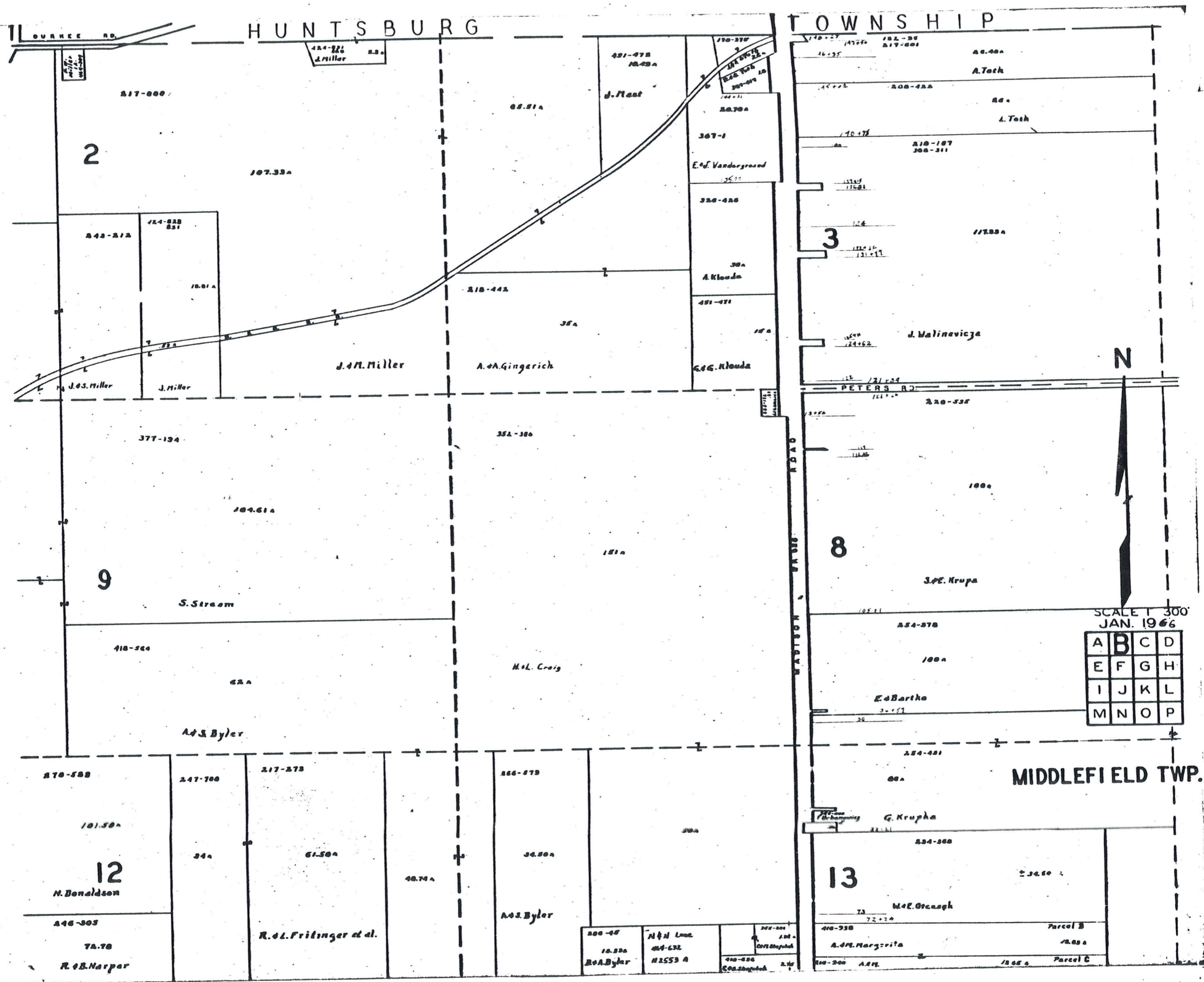


SCALE 1" = 300'
JAN. 1966

A	B	C	D
E	F	G	H
I	J	K	L
M	N	O	P

MIDDLEFIELD TWP.

12



HUNTSBURG TOWNSHIP

2

3

8

9

12

13

N

SCALE 1" = 300'
JAN. 1966

A	B	C	D
E	F	G	H
I	J	K	L
M	N	O	P

MIDDLEFIELD TWP.

QUARREY RD.

PETERS RD.

WADSWORTH ST.

217-000

247-700

217-273

266-873

246-303

R.O.L. Frilingger et al.

A.S. Byler

410-330

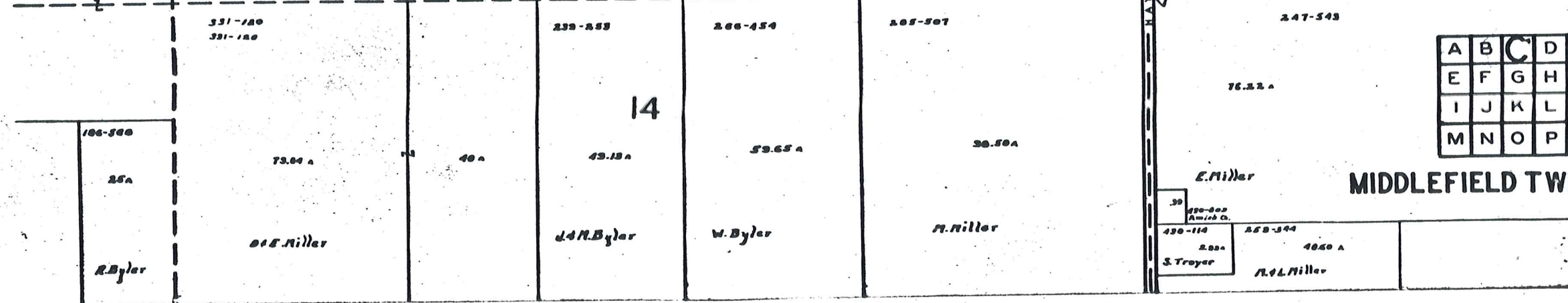
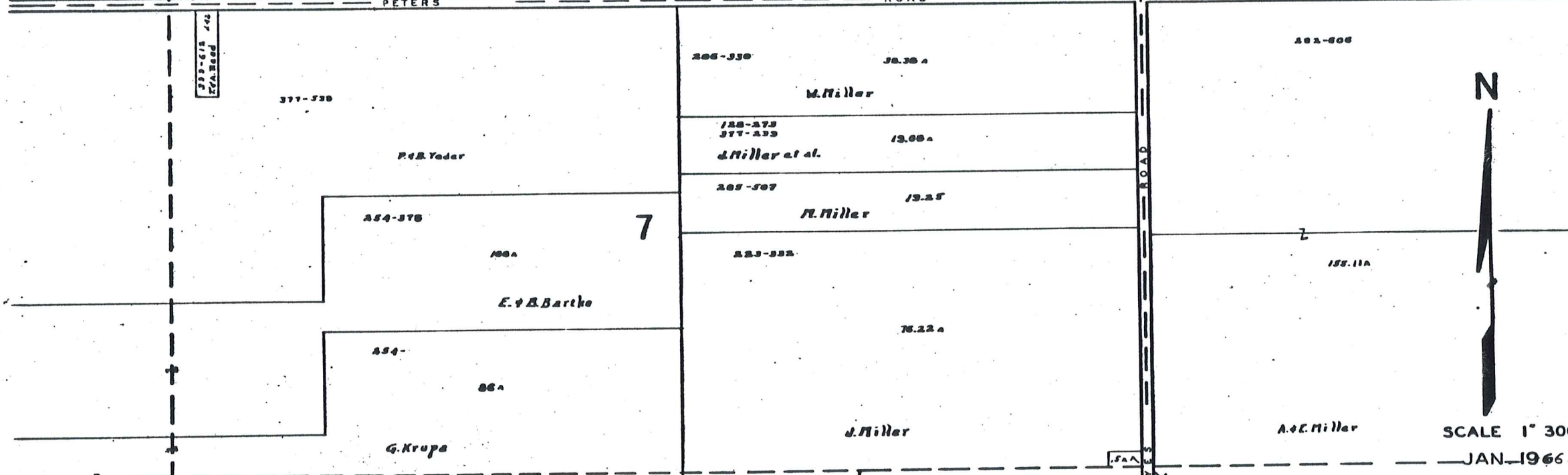
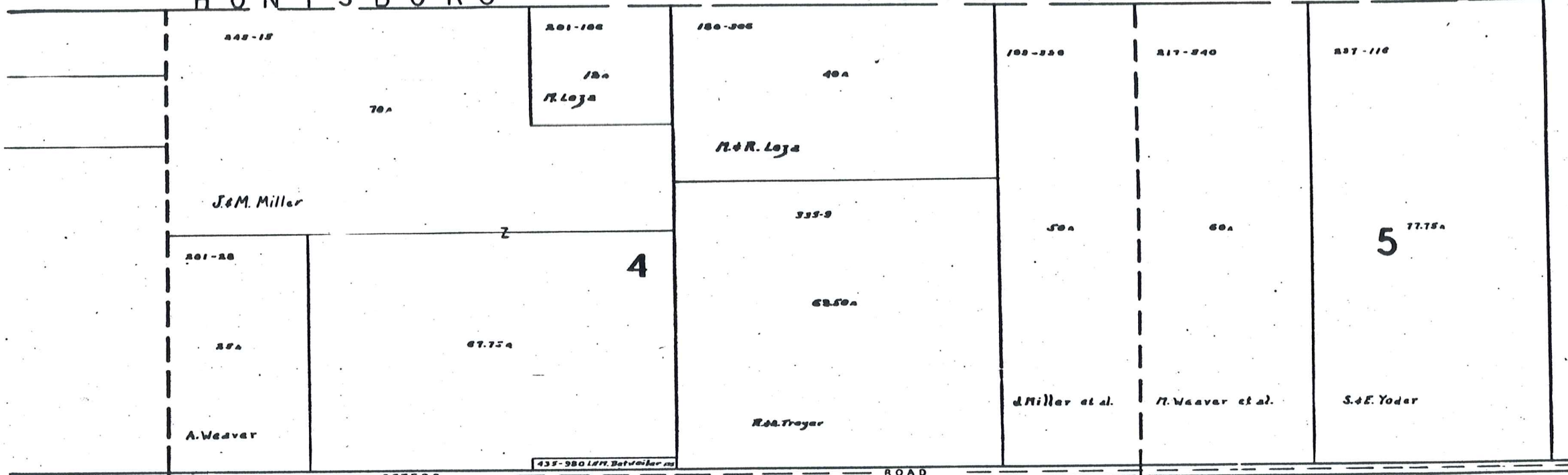
A.M. Margotta

Parcel B

Parcel C

HUNTSBURG

TOWNSHIP



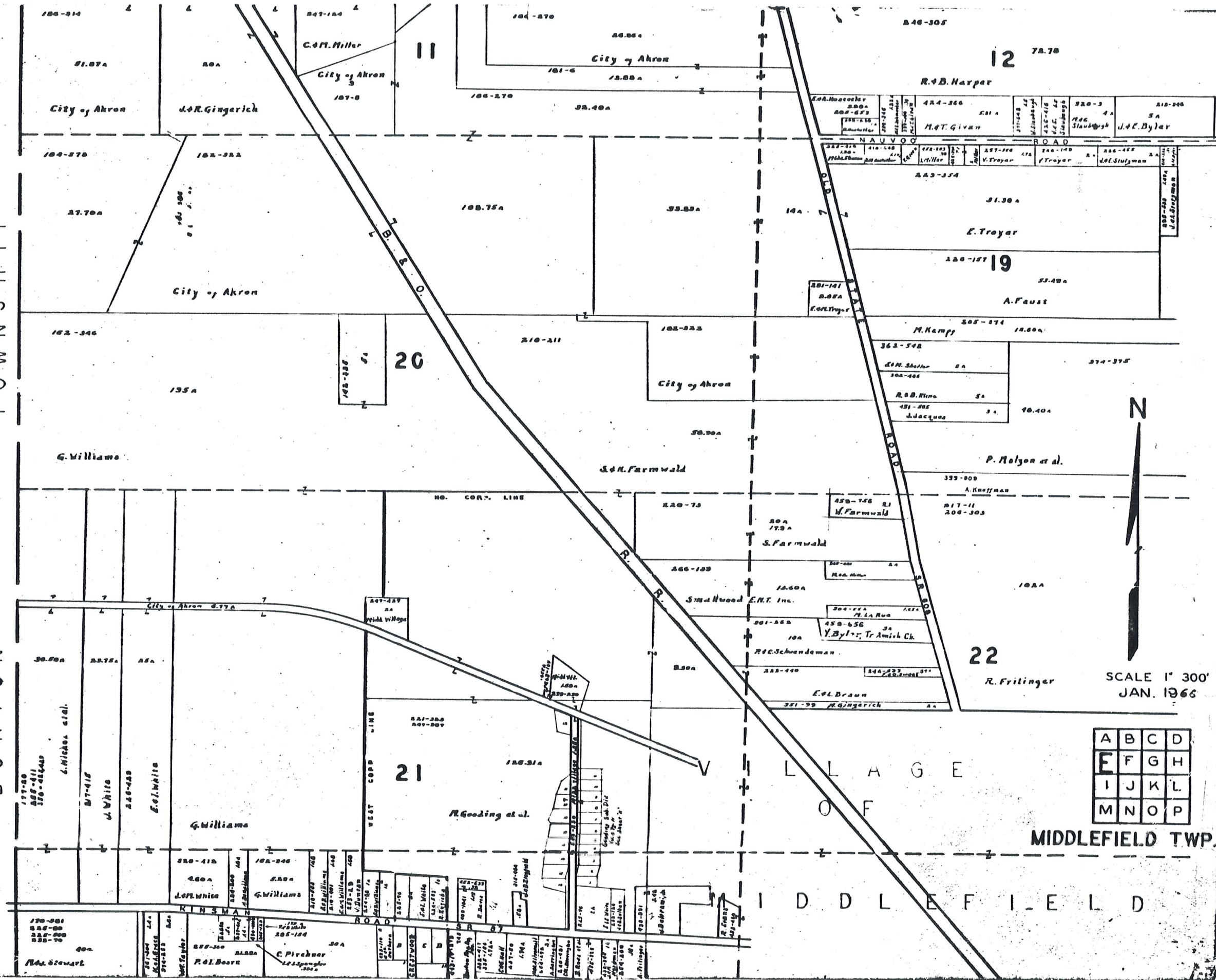
SCALE 1" 300'
JAN-1966

A	B	C	D
E	F	G	H
I	J	K	L
M	N	O	P

MIDDLEFIELD TWP.

TOWNSHIP

BURTON

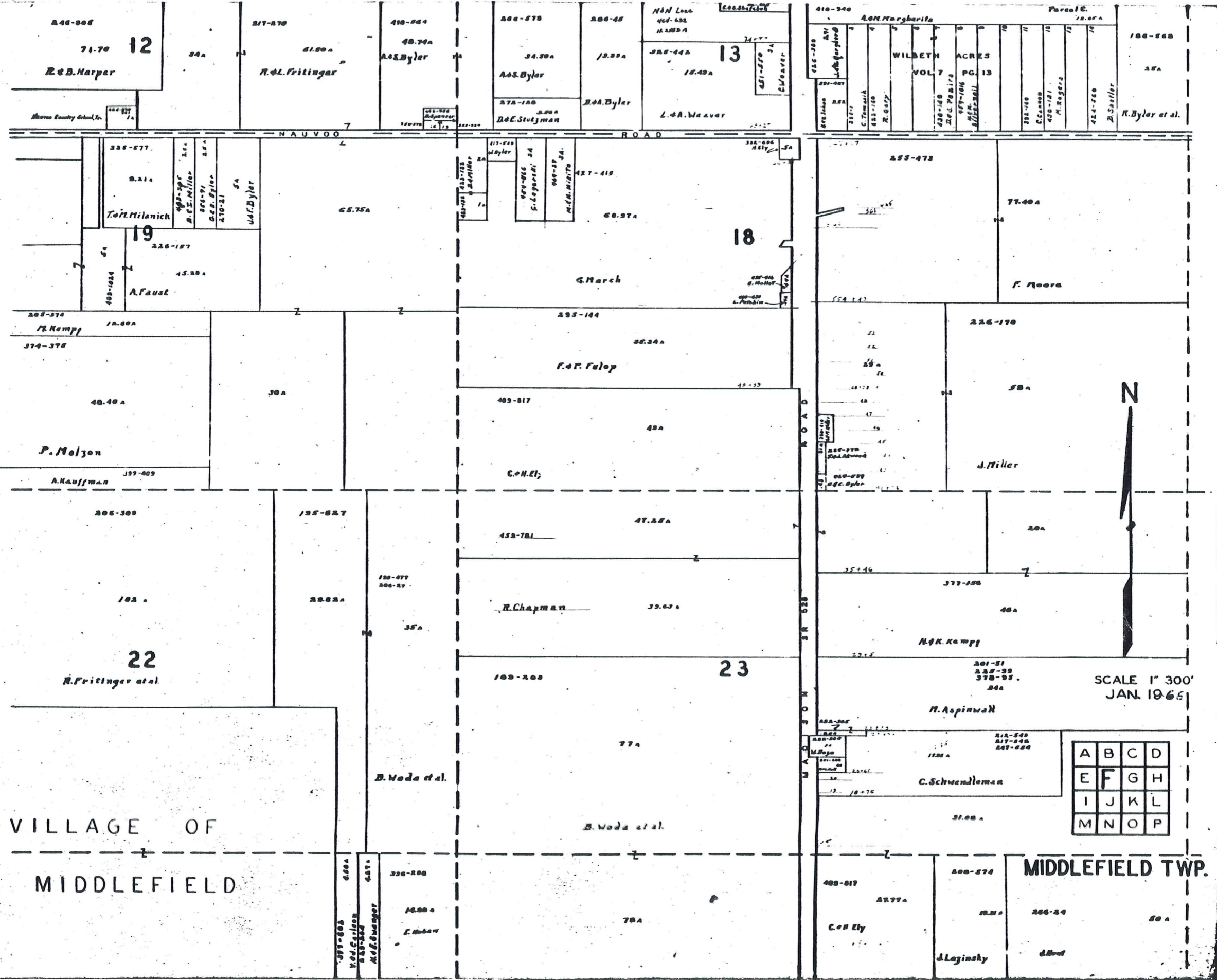


SCALE 1" 300'
JAN. 1966

A	B	C	D
E	F	G	H
I	J	K	L
M	N	O	P

MIDDLEFIELD TWP.

MIDDLEFIELD



VILLAGE OF
MIDDLEFIELD

MIDDLEFIELD TWP.

A	B	C	D
E	F	G	H
I	J	K	L
M	N	O	P

SCALE 1" 300'
JAN. 1965

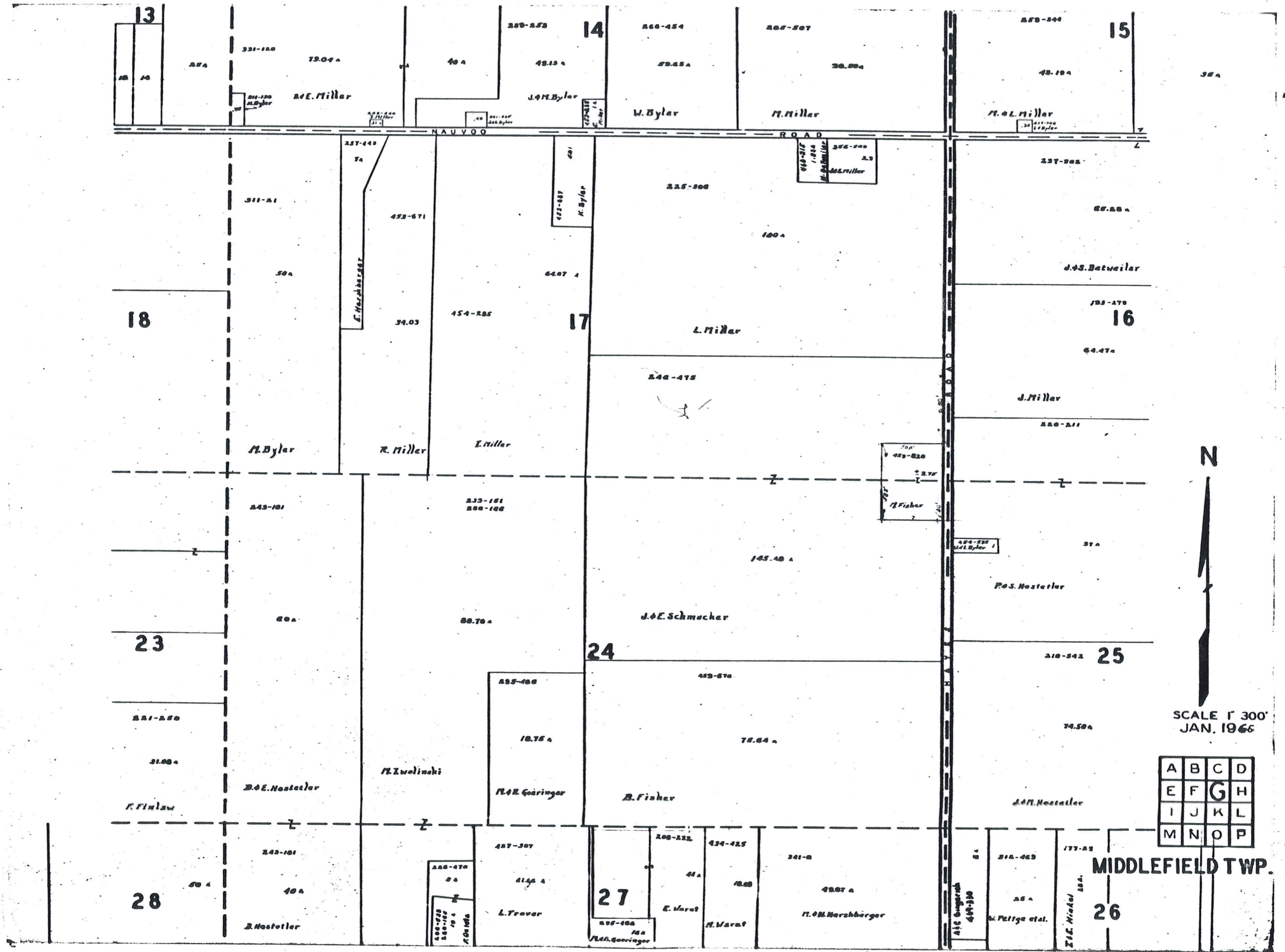


410-340 A. & N. Margharita Parcel E. 28.67 A.

ACRES	ACRES	ACRES	ACRES	ACRES	ACRES	ACRES	ACRES	ACRES	ACRES
100-568	28A								

WILBETH VOL 7 PG. 13

ACRES: 100-568, 100-569, 100-570, 100-571, 100-572, 100-573, 100-574, 100-575, 100-576, 100-577, 100-578, 100-579, 100-580, 100-581, 100-582, 100-583, 100-584, 100-585, 100-586, 100-587, 100-588, 100-589, 100-590, 100-591, 100-592, 100-593, 100-594, 100-595, 100-596, 100-597, 100-598, 100-599, 100-600, 100-601, 100-602, 100-603, 100-604, 100-605, 100-606, 100-607, 100-608, 100-609, 100-610, 100-611, 100-612, 100-613, 100-614, 100-615, 100-616, 100-617, 100-618, 100-619, 100-620, 100-621, 100-622, 100-623, 100-624, 100-625, 100-626, 100-627, 100-628, 100-629, 100-630, 100-631, 100-632, 100-633, 100-634, 100-635, 100-636, 100-637, 100-638, 100-639, 100-640, 100-641, 100-642, 100-643, 100-644, 100-645, 100-646, 100-647, 100-648, 100-649, 100-650, 100-651, 100-652, 100-653, 100-654, 100-655, 100-656, 100-657, 100-658, 100-659, 100-660, 100-661, 100-662, 100-663, 100-664, 100-665, 100-666, 100-667, 100-668, 100-669, 100-670, 100-671, 100-672, 100-673, 100-674, 100-675, 100-676, 100-677, 100-678, 100-679, 100-680, 100-681, 100-682, 100-683, 100-684, 100-685, 100-686, 100-687, 100-688, 100-689, 100-690, 100-691, 100-692, 100-693, 100-694, 100-695, 100-696, 100-697, 100-698, 100-699, 100-700, 100-701, 100-702, 100-703, 100-704, 100-705, 100-706, 100-707, 100-708, 100-709, 100-710, 100-711, 100-712, 100-713, 100-714, 100-715, 100-716, 100-717, 100-718, 100-719, 100-720, 100-721, 100-722, 100-723, 100-724, 100-725, 100-726, 100-727, 100-728, 100-729, 100-730, 100-731, 100-732, 100-733, 100-734, 100-735, 100-736, 100-737, 100-738, 100-739, 100-740, 100-741, 100-742, 100-743, 100-744, 100-745, 100-746, 100-747, 100-748, 100-749, 100-750, 100-751, 100-752, 100-753, 100-754, 100-755, 100-756, 100-757, 100-758, 100-759, 100-760, 100-761, 100-762, 100-763, 100-764, 100-765, 100-766, 100-767, 100-768, 100-769, 100-770, 100-771, 100-772, 100-773, 100-774, 100-775, 100-776, 100-777, 100-778, 100-779, 100-780, 100-781, 100-782, 100-783, 100-784, 100-785, 100-786, 100-787, 100-788, 100-789, 100-790, 100-791, 100-792, 100-793, 100-794, 100-795, 100-796, 100-797, 100-798, 100-799, 100-800, 100-801, 100-802, 100-803, 100-804, 100-805, 100-806, 100-807, 100-808, 100-809, 100-810, 100-811, 100-812, 100-813, 100-814, 100-815, 100-816, 100-817, 100-818, 100-819, 100-820, 100-821, 100-822, 100-823, 100-824, 100-825, 100-826, 100-827, 100-828, 100-829, 100-830, 100-831, 100-832, 100-833, 100-834, 100-835, 100-836, 100-837, 100-838, 100-839, 100-840, 100-841, 100-842, 100-843, 100-844, 100-845, 100-846, 100-847, 100-848, 100-849, 100-850, 100-851, 100-852, 100-853, 100-854, 100-855, 100-856, 100-857, 100-858, 100-859, 100-860, 100-861, 100-862, 100-863, 100-864, 100-865, 100-866, 100-867, 100-868, 100-869, 100-870, 100-871, 100-872, 100-873, 100-874, 100-875, 100-876, 100-877, 100-878, 100-879, 100-880, 100-881, 100-882, 100-883, 100-884, 100-885, 100-886, 100-887, 100-888, 100-889, 100-890, 100-891, 100-892, 100-893, 100-894, 100-895, 100-896, 100-897, 100-898, 100-899, 100-900, 100-901, 100-902, 100-903, 100-904, 100-905, 100-906, 100-907, 100-908, 100-909, 100-910, 100-911, 100-912, 100-913, 100-914, 100-915, 100-916, 100-917, 100-918, 100-919, 100-920, 100-921, 100-922, 100-923, 100-924, 100-925, 100-926, 100-927, 100-928, 100-929, 100-930, 100-931, 100-932, 100-933, 100-934, 100-935, 100-936, 100-937, 100-938, 100-939, 100-940, 100-941, 100-942, 100-943, 100-944, 100-945, 100-946, 100-947, 100-948, 100-949, 100-950, 100-951, 100-952, 100-953, 100-954, 100-955, 100-956, 100-957, 100-958, 100-959, 100-960, 100-961, 100-962, 100-963, 100-964, 100-965, 100-966, 100-967, 100-968, 100-969, 100-970, 100-971, 100-972, 100-973, 100-974, 100-975, 100-976, 100-977, 100-978, 100-979, 100-980, 100-981, 100-982, 100-983, 100-984, 100-985, 100-986, 100-987, 100-988, 100-989, 100-990, 100-991, 100-992, 100-993, 100-994, 100-995, 100-996, 100-997, 100-998, 100-999, 100-1000.



13

14

15

18

17

16

23

24

25

28

27

26

331-120
73.09 a
B. E. Miller

289-253
49.15 a
J. H. Byler

266-454
53.65 a
W. Byler

268-507
30.80 a
H. Miller

259-344
43.19 a
H. E. Miller

311-21
50 a
H. Byler

453-671
34.03
R. Miller

454-285
64.07 a
L. Miller

225-300
100 a
L. Miller

237-308
67.25 a
J. S. Batweiler

245-101
60 a
H. Byler

235-181
200-186
88.70 a
R. Miller

145-48
145.48 a
J. & E. Schmocher

220-211
37 a
R. S. Hostetler

245-181
40 a
B. E. Hostetler

220-211
88.70 a
H. Zwolinski

235-181
18.75 a
H. E. Goringar

235-181
75.64 a
B. Fisher

210-242
74.50 a
J. H. Hostetler

245-181
40 a
B. Hostetler

220-211
41.50 a
L. Trover

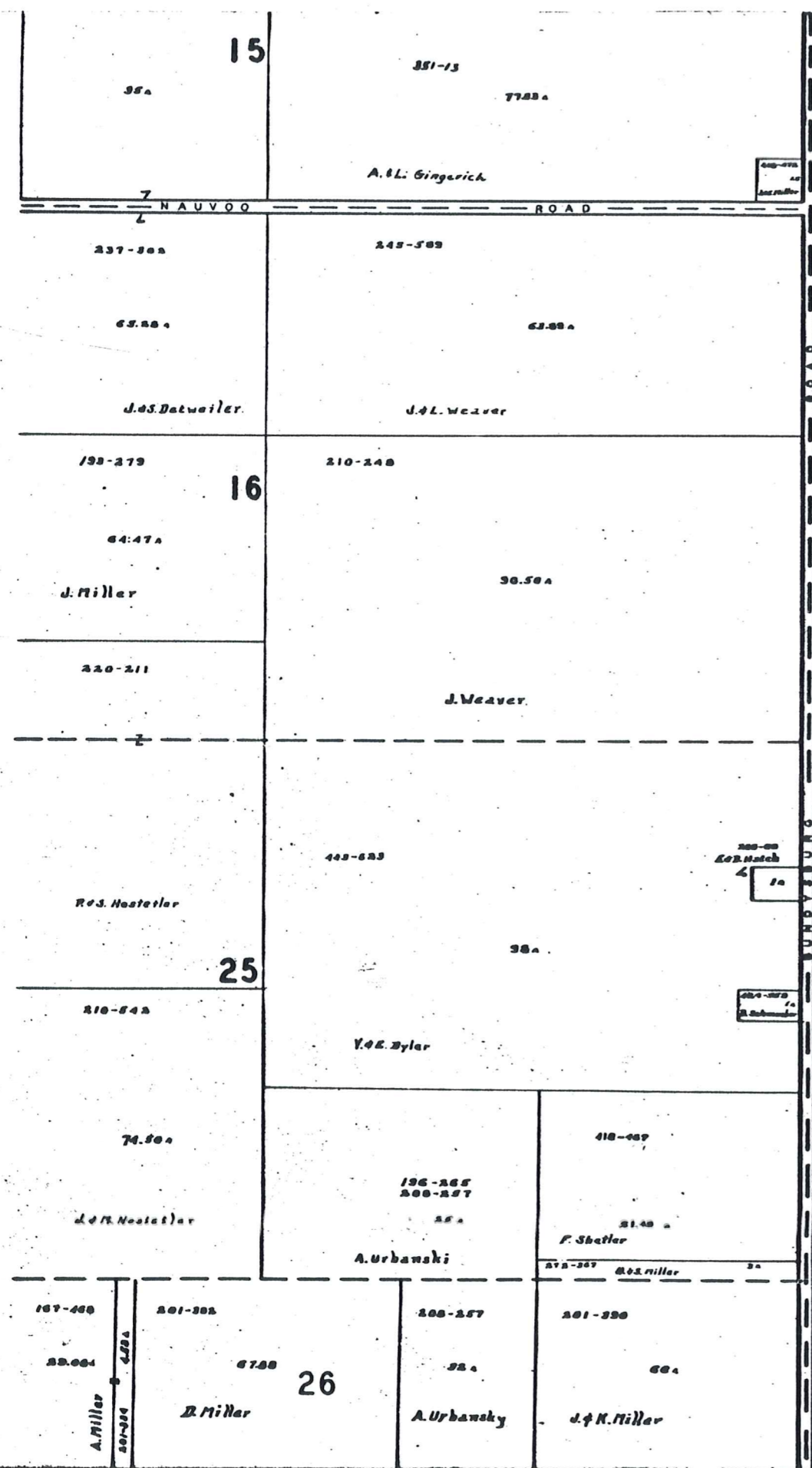
208-222
44 a
E. Marot

434-425
18.00
H. Marot

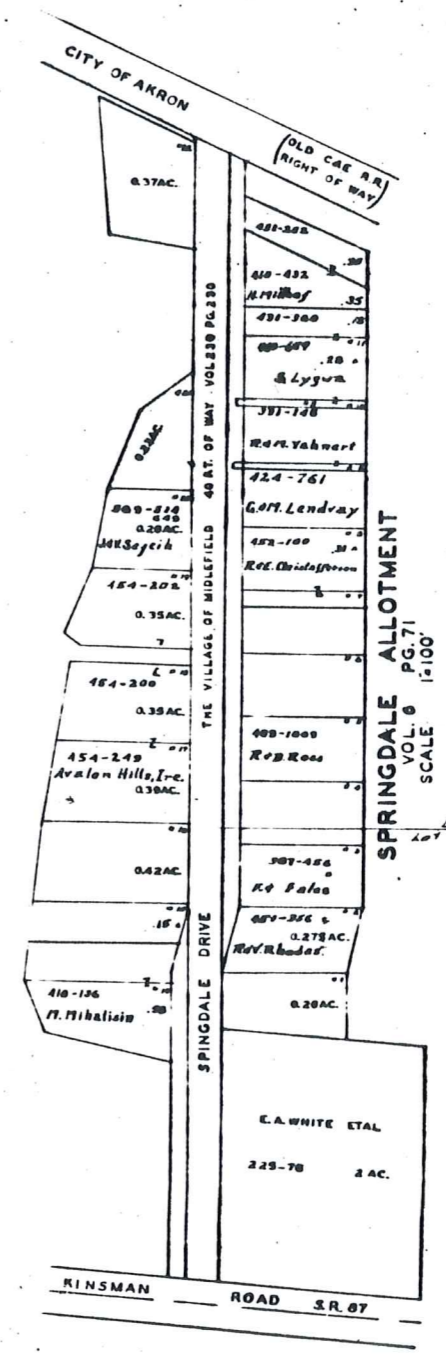
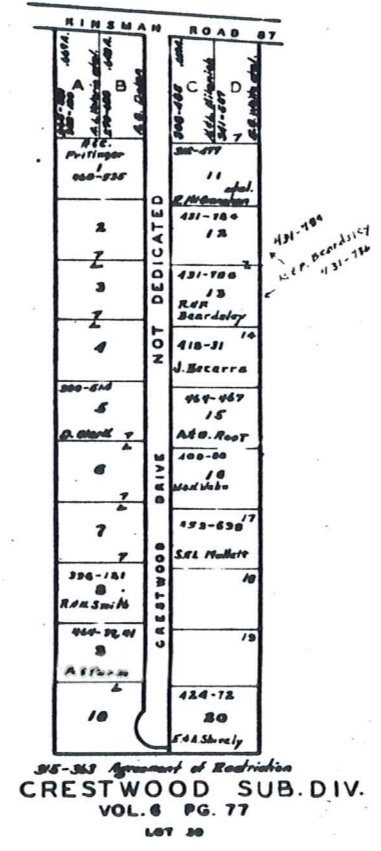
241-0
49.87 a
H. M. Marshberger

210-463
25 a
H. Pettig et al.

177-23
22 a
Z. C. Nicksel



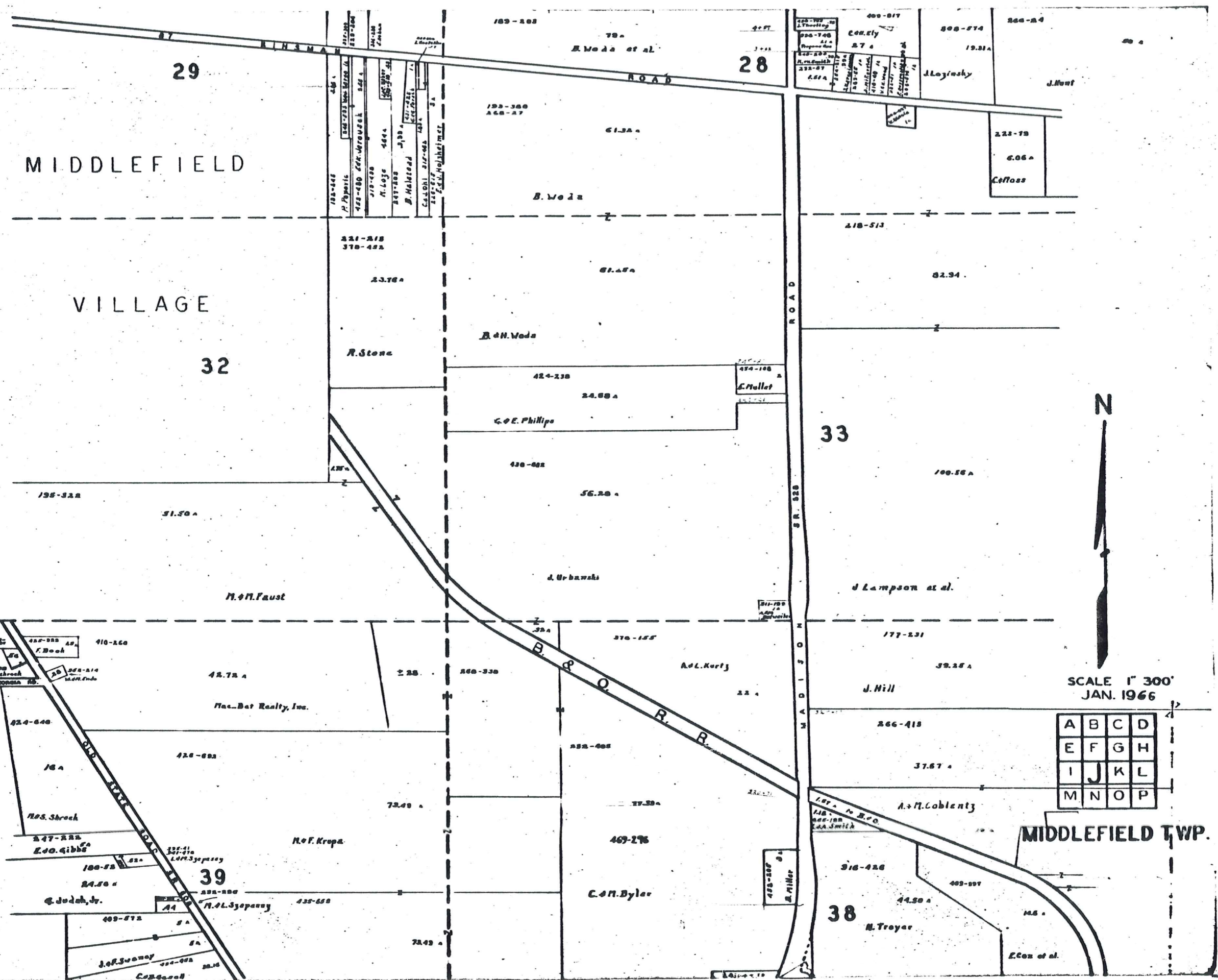
T R U M B U L L C O U N T Y



SCALE 1" 300'
JAN. 19 66

A	B	C	D
E	F	G	H
I	J	K	L
M	N	O	P

MIDDLEFIELD TWP.



MIDDLEFIELD

VILLAGE



SCALE 1" = 300'
JAN. 1966

A	B	C	D
E	F	G	H
I	J	K	L
M	N	O	P

MIDDLEFIELD TWP.

29

28

32

33

39

38

B. Woda et al.

B. Woda

B. & H. Woda

R. Stone

H. & H. Faust

Nac. Bat Realty, Inc.

H. & F. Kropp

H. & L. Szepansky

Ad. Kurtz

J. Hill

A. & M. Coblentz

C. & H. Byler

M. Troyer

E. Cox et al.

189-188

193-388
268-27

321-218
370-422

23.76 a

424-238

24.88 a

G. & E. Phillips

430-402

56.28 a

J. Urbanski

376-155

22 a

177-231

39.25 a

266-418

37.67 a

316-426

44.50 a

409-097

145 a

428-100 in
27th May
1956-748
21 a
Repurchase
142-200 in
N. W. Smith
232-07
2.67 a

400-017
Con. City
27 a

808-074
19.31 a

248-24

J. Lozinsky

J. Hunt

452-000
F. Book

410-260

424-640
16 a

Mrs. Shreck

447-222
E. O. Gibbs

180-52
24.50 a

G. Judah, Jr.

409-072

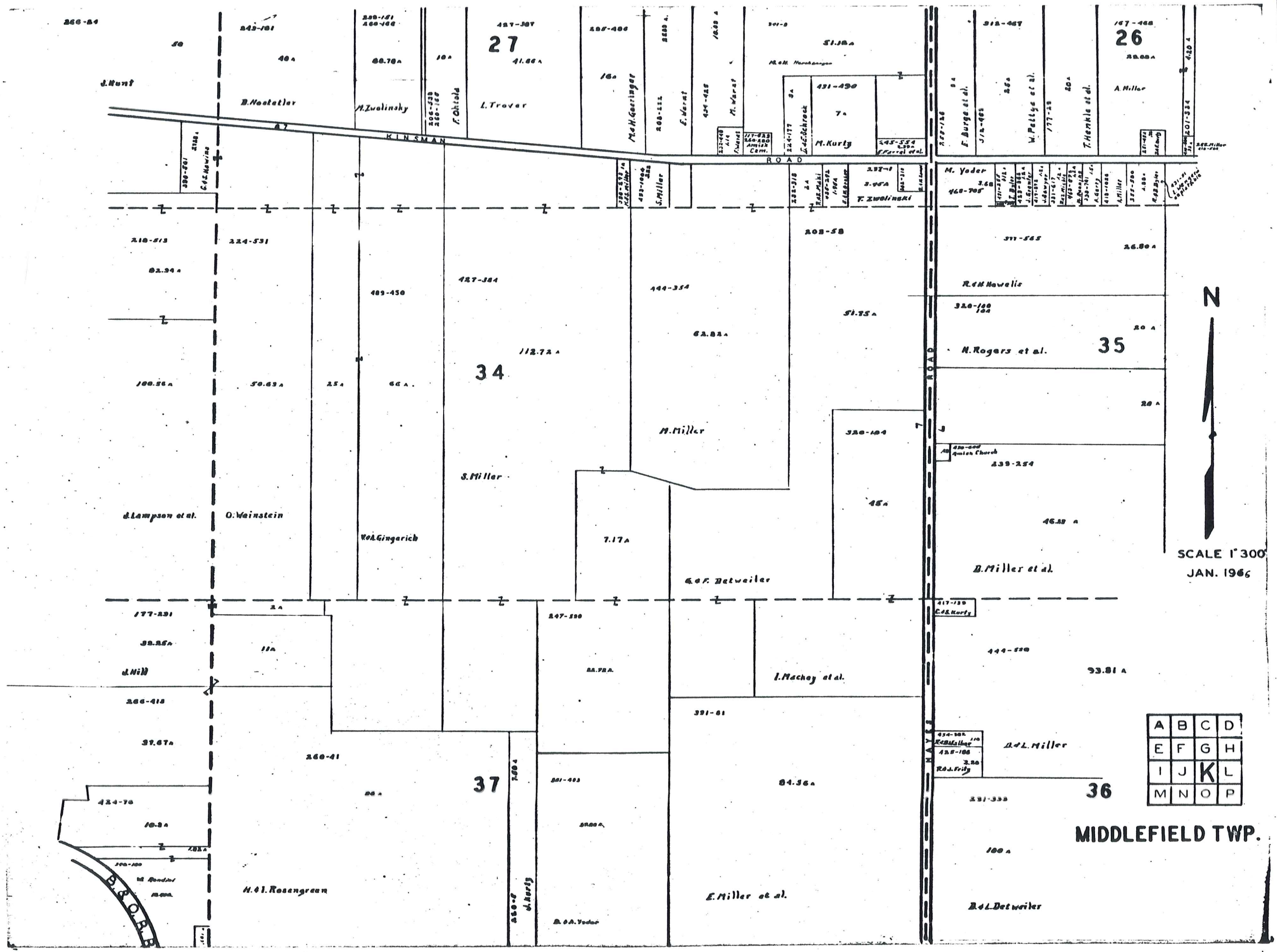
Jeff. Swamy

400-002

474-108
C. Pallet

311-250
Adm
200
200

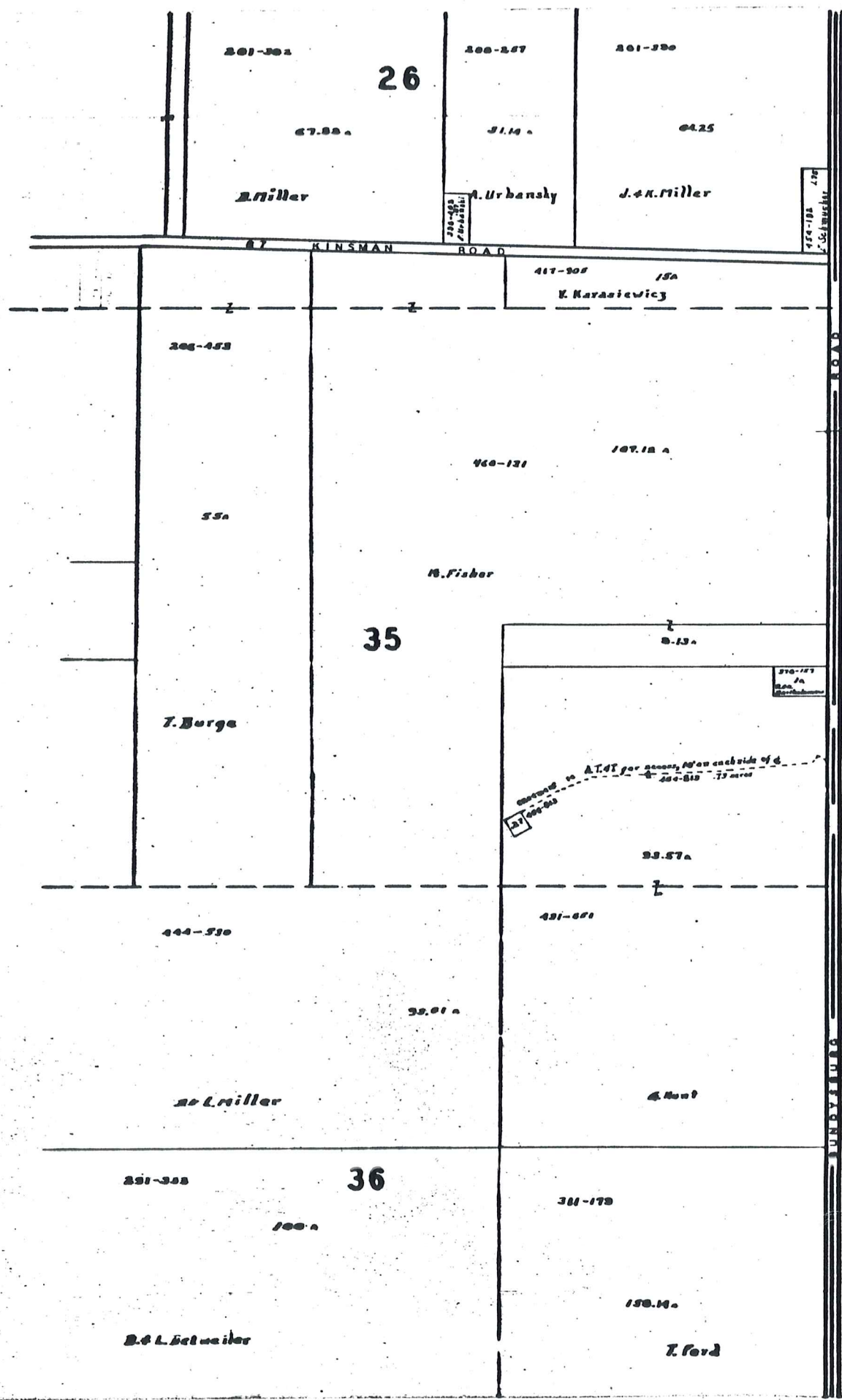
428-207
M. Miller



SCALE 1"=300'
JAN. 1966

A	B	C	D
E	F	G	H
I	J	K	L
M	N	O	P

MIDDLEFIELD TWP.



T R U M B U L L C O U N T Y



SCALE 1" = 300'
JAN. 1966

A	B	C	D
E	F	G	H
I	J	K	L
M	N	O	P

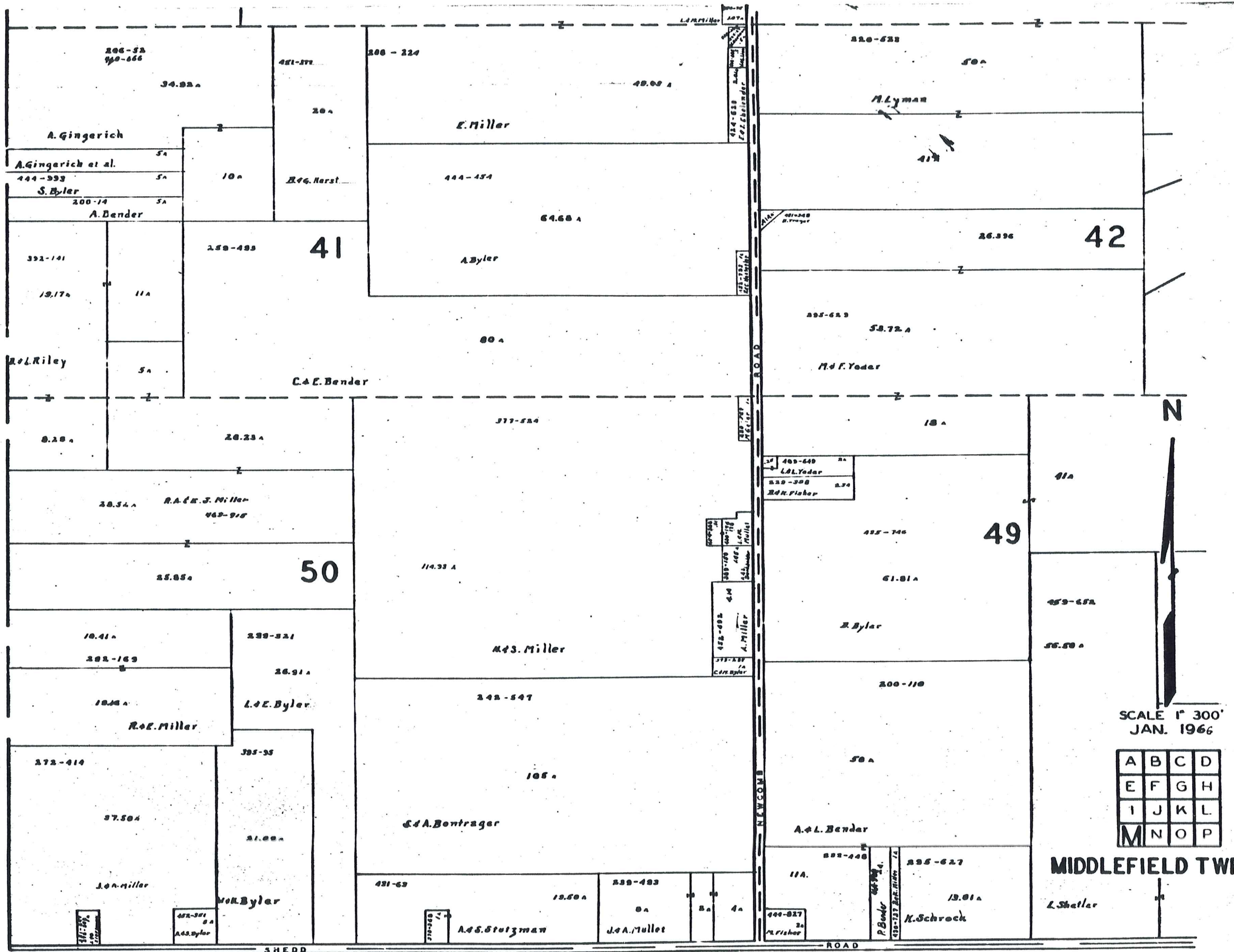
MIDDLEFIELD TWP.

P
H
I
P

S
H
I
P

T
O
W
N
S
H
I
P

B
U
R
T
O
N

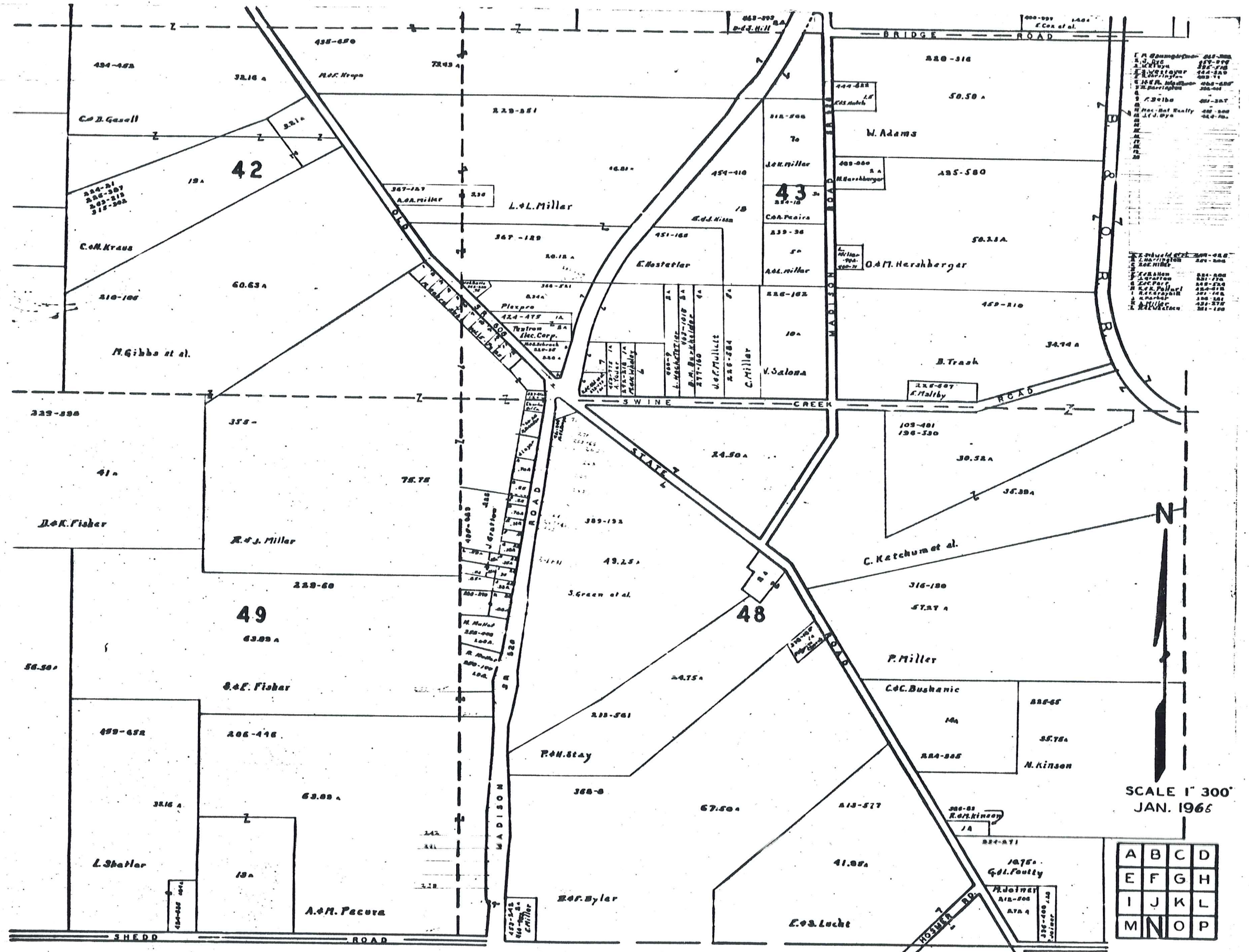


SCALE 1" = 300'
JAN. 1966

A	B	C	D
E	F	G	H
I	J	K	L
M	N	O	P

MIDDLEFIELD TWP.

P A R K M A N T O W N S H I P



I. A. Thompson 215-220
 J. W. Hill 221-225
 K. W. Taylor 226-230
 L. H. Johnson 231-235
 M. H. Johnson 236-240
 N. H. Johnson 241-245
 O. H. Johnson 246-250
 P. H. Johnson 251-255
 Q. H. Johnson 256-260
 R. H. Johnson 261-265
 S. H. Johnson 266-270
 T. H. Johnson 271-275
 U. H. Johnson 276-280
 V. H. Johnson 281-285
 W. H. Johnson 286-290
 X. H. Johnson 291-295
 Y. H. Johnson 296-300
 Z. H. Johnson 301-305

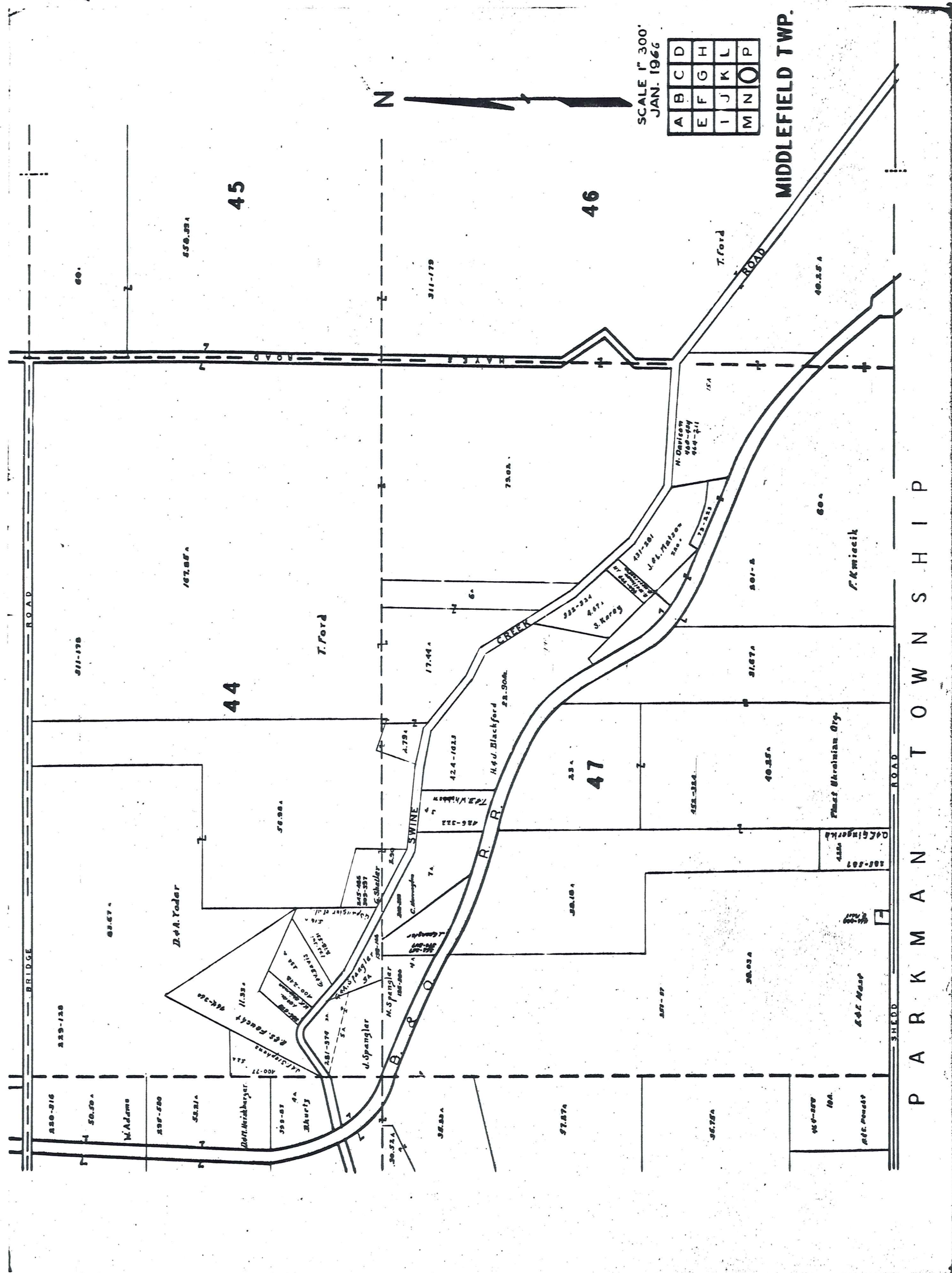


SCALE 1" = 300'
JAN. 1966

A	B	C	D
E	F	G	H
I	J	K	L
M	N	O	P

P A R K M A N T O W N S H I P

MIDDLEFIELD TWP.

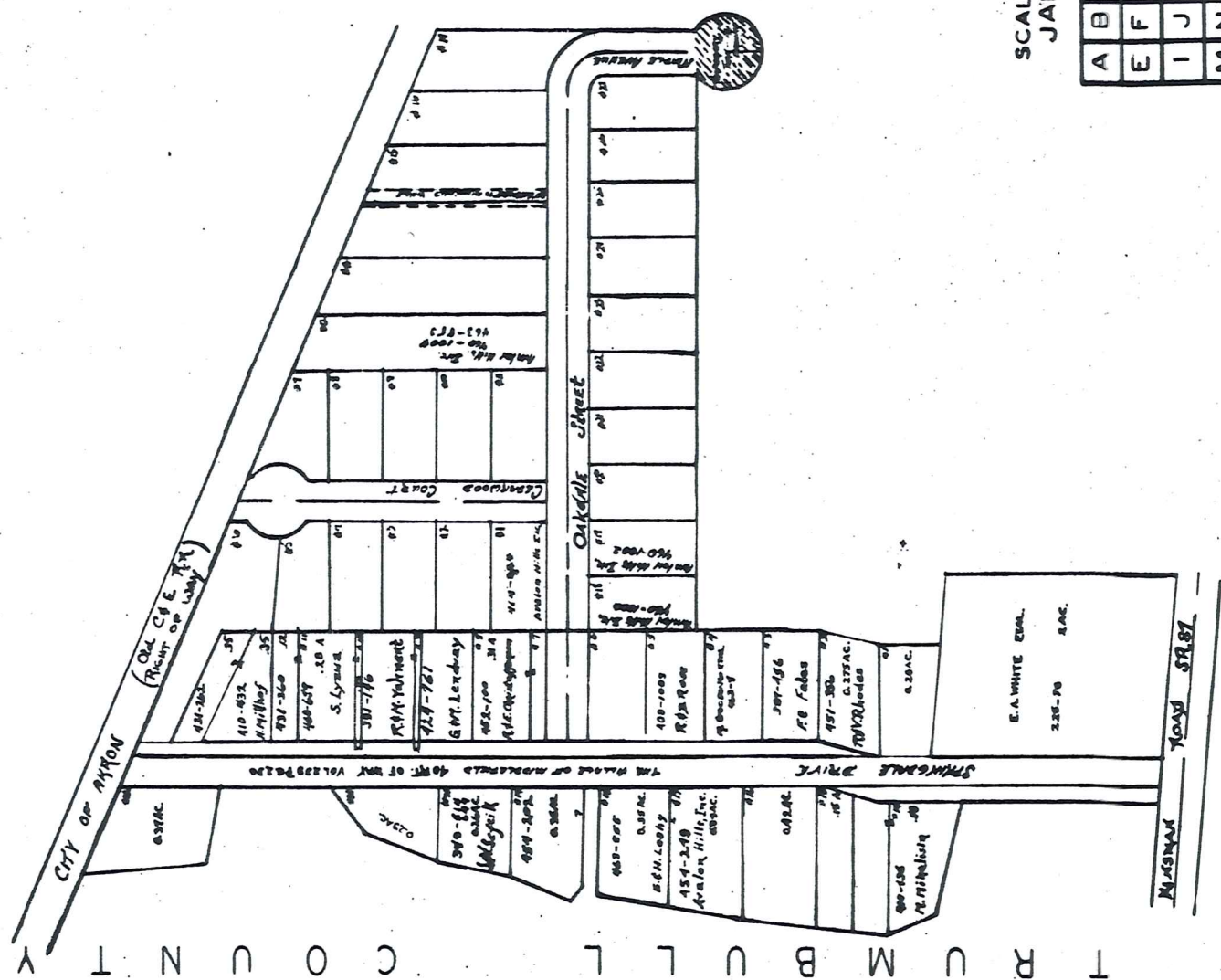
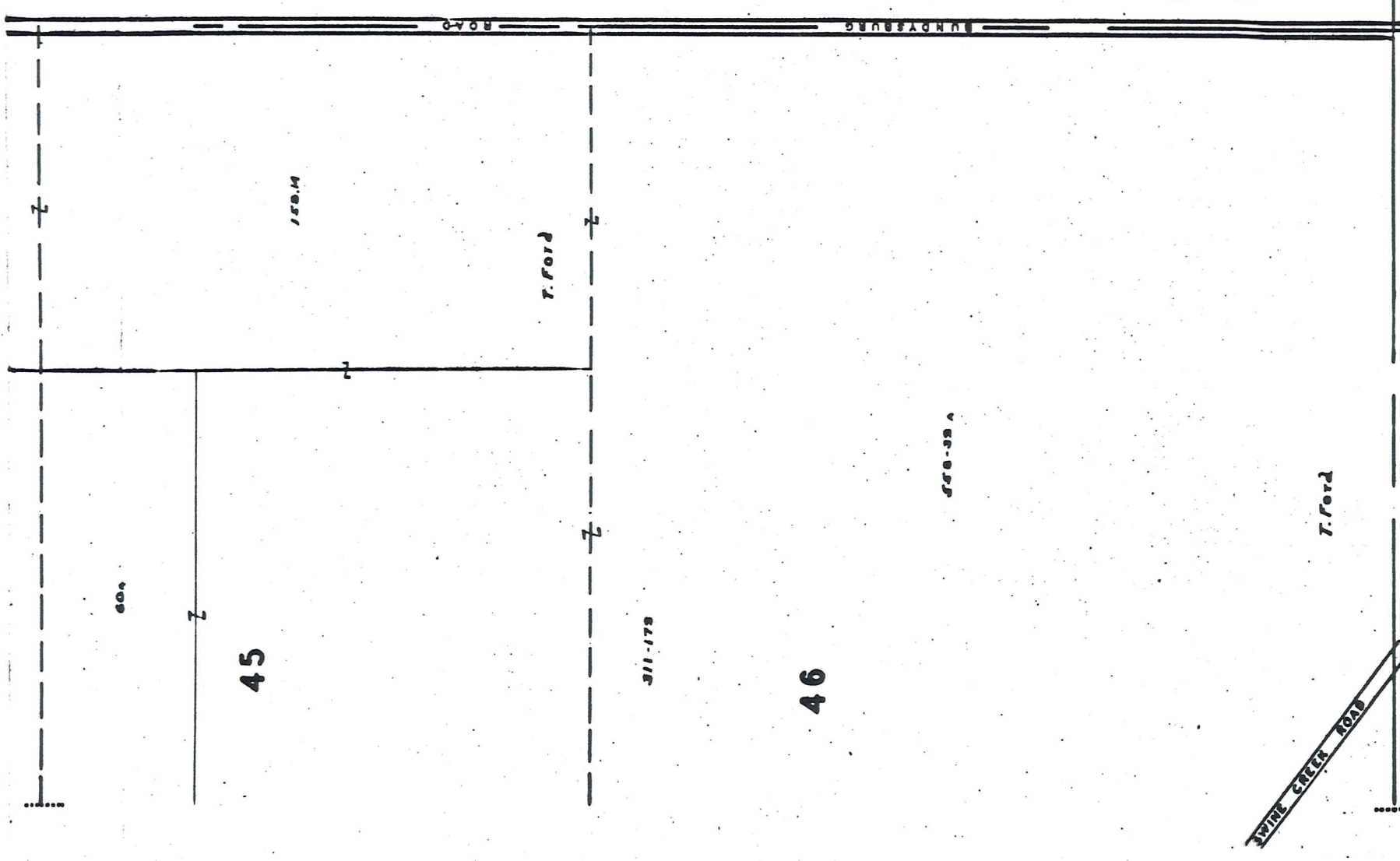


SCALE 1" = 300'
JAN. 1966

A	B	C	D
E	F	G	H
I	J	K	L
M	N	O	P

MIDDLEFIELD TWP.

P A R K M A N T O W N S H I P



SCALE 1" = 300'
JAN. 1966

A	B	C	D
E	F	G	H
I	J	K	L
M	N	O	P

MIDDLEFIELD TWP.

PARKMAN TOWNSHIP